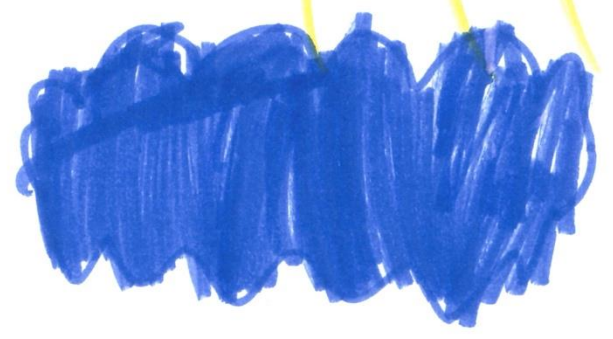


Welcome



m m



Marlborough School



For September 2026

Dear Families,

Welcome to our Marlborough school community! We look forward to closely working with you and teaching your wonderful children. We are all very excited to meet you and your children on May 27th, 2026.

This booklet, including our *Kindergarten Philosophy* statement, will answer some questions you may have as you join our school community. Please keep it handy for future reference as it contains important information. We highly recommend checking your email and our school website for updated information and general school information:

www.marlborough.burnabyschools.ca

Most importantly, always feel free to ask the classroom teacher any questions you may have. It is our pleasure to help and welcome you to Marlborough!

Gradual Entry Schedule in September

Our district offers and supports a gradual entry process which allows children to connect with different teachers, feel comfortable at school, make friends and understand routines, in smaller groups. It helps set them up for a successful start to school. **Please see the September calendar for the gradual entry schedule.** Your child will be assigned to a group to start their school year which will be shared in late August. Please note that classes are not finalized until the last day of the schedule.

Class Placement Slips

All students are assigned to a group and a Teacher when starting their Gradual Entry schedule. Near the end of the schedule, School Based Team and Kindergarten Teachers come together to ensure we have balanced classes. Confirmation slips are sent home on the last day informing parents of their child's teacher and room number.



You will receive your **child's group** so that you know when and where to bring them for the first two weeks.

Please note:

- ❖ *Welcome to Marlborough Orientation with Parents* will be on Wednesday, May 27th, @ **1:15 – 2:30 pm**
- ❖ There are no classes for Kindergarten students on Tuesday, September 8th and Wednesday, September 9th
- ❖ Kindergarten Check-in Tuesday, September 8 1:30pm-2:00pm
- ❖ *Welcoming Conversations* may begin Wednesday, September 9th
- ❖ Gradual Entry Schedule begins Thursday, September 10th
- ❖ Class placement slips go home to parents Friday, September 18th
- ❖ Students may start full days beginning September 21st

Welcoming Conversations

A Welcoming Conversation is a meeting between the parents and the teacher to share information about your child, the school, and the Kindergarten program. During Gradual Entry, you will be contacted by a Kindergarten teacher to arrange a Welcoming Conversation. Please note that this Kindergarten teacher may not be your child's permanent Kindergarten teacher, as classes are not finalized until the end of gradual entry.

You can expect the teacher to ask questions about your child's personality, learning history, personal preferences and strengths. They will also confirm logistical information like adults verified for pickup and after school arrangements. This is good time to share with the teacher any recent challenges your child has been having and ask any questions you may have about the year to come. This is the beginning of a year-long partnership in which you and your child's teacher will communicate about your child's learning. We have found that this proactive approach to school entry helps teachers meet the unique needs of new families/children. These conversations also help to ensure a more "balanced" organization of K students (i.e. diverse strengths, siblings, etc.) across classrooms.

Absences, Arrivals and Dismissals

The regular school day begins at 8:50am and ends at 2:48pm each day. Please be on time for drop off and pick up.

- **Parent Parking:** Parents may park along Sanders Street or in a designated spot in the Dover Street Parking lot. Please ensure you walk your child to their classroom door and wait until they are greeted by their teacher. This ensures students arrive safely to school.
- **Arrival:** Students should arrive at school on time. Please line up and wait outside your classroom door and stay with your child until the teacher opens the door and greets them into the classroom. Students should not enter the school or access their classroom through the interior doors.
- **Late Arrival:** If your child arrives late and the outside classroom door is closed, please bring your child to the East Building office to sign in.
- **Dismissal:** Children will be dismissed by their teacher through the outside classroom doors at dismissal time. Please be on time. Do not stand far from the doors and motion your child to run to you; making eye contact with the teacher is important. If someone different is picking up your child, please let the teacher know beforehand preferably in writing.
- **Early Pick Up:** If your child is being picked up early, notify the classroom teacher in the morning to arrange a pick-up time and sign out at the East Office
- **Absences:** If your child is absent, call **604 296 9021 and press 2** to leave a message on the school's attendance line.

Westcoast Recess

Students will go outside every day for recess and lunch, in all kinds of weather. Please dress your child appropriately in the mornings and be prepared for sudden changes in the weather. Rain boots, rain pants, and a hooded waterproof jacket, are highly recommended for their comfort. A change of clothes and indoor running shoes are highly recommended and may be kept in the classroom.



Playground Safety

In September until mid to late October, Kindergarten students learn the safety rules around how to use the Kindergarten playground equipment seen below. Teachers will review and practice playground safety such as slide and swing use as well as playground boundaries. During school hours, our students are always supervised while on the playground by teachers or Noon Hour Supervisors wearing vests. If families are using the playground before or after school hours, please ensure your child is supervised and is playing safely with the equipment and other children. In addition, parents are not to come onto school grounds during recess or lunch to supervise their child. Kindergarten students are later invited to explore more of the East Side play areas.



School Backpack and Shoes

Students need a full-size backpack for school; it needs to fit a lunch box, extra clothes, and school materials. Please keep all toys at home unless instructed by the teacher.



Students also need an extra pair of indoor shoes. If your child doesn't know how to tie their shoelaces, please practice at home this summer if you want them to wear lace ups. Otherwise, send only Velcro fastening or slip-on type of running shoes to school. Students cannot wear Crocs, boots, or slippers to gym class. You do not need to send the extra clothes until your child has their permanent classroom and teacher.



Kindergarten Supplies

In Kindergarten, students usually share all classroom supplies and materials. There will be a \$25 supply fee to cover the cost of supplies and an additional \$15 to cover the cost of special arts and crafts activities done throughout the year. Both fees can be paid using School Cash-Online in September following the directions on the school's website.

If you choose to purchase supplies for your child, please speak with your classroom teacher for an approved supply list specific to your child's Kindergarten class before purchasing supplies. There is no need to label their supplies as they will be shared. We will provide materials during the first few weeks for the students to use; please do not send any supplies until your child is assigned to their permanent classroom.



Healthy Snacks and Lunches

We recognize good nutrition is invaluable for student learning and we encourage eating healthy foods at school. Please do not send juice boxes, pop, chocolate, cake, cookies, candy or chips to school. Some healthy snack and lunch food choices are: Fresh fruit and vegetables, cheese, crackers, sandwiches, or dinner leftovers. Water fountains are available but best used with a water bottle.



We expect students to bring their lunches in reusable containers that they can open and bring their own utensils. We are not able to warm up lunches or provide utensils. We strive to be a **Garbage Free School** and your child will bring home all their leftovers, wrappers, and containers.

Sleep Hygiene

Everyone knows what it feels like to try to get through the day if you haven't had enough sleep. For students, that can mean having trouble learning because of difficulty concentrating, solving problems, or

BENEFITS OF ENOUGH SLEEP



Better Brain
Improved memory
and concentration



Better Body
Improved energy



Better Mood
Improved emotional
resilience

remembering. Sleep is a time for your brain to repair cells and build new pathways, which is critical for learning. Simple things like keeping regular bed and wakeup times; turning off electronics at least 1 hour before bed; reducing noise and light; healthy eating, exercising, and getting outside all make a big difference in a child being ready to learn. [Please refer to the Burnaby School District website for more details.](#)

Creating Independence and Social Emotional Skills

Although everyone learns in different ways, this is a good starting point to go over with your child(ren) in creating independence. Start these challenges that we will be working on in the school year.

B	I	N	G	O
Listen with my eyes	Share a smile	Keep hands to self	Calm down when mad	Put lunch container in backpack
Wash my hands	Take my shoes off	Say "Hello"	Say my name	Take turns
Use the swing	Use Scissors	Free!	Put my toys away	Write my first name
Close my plastic container	Hang up my jacket	Listen with my ears	Put on my boots	Hold a picture book
Say Sorry	Know how to go down a slide	Fill my water bottle	Ask for help	Zip up my jacket

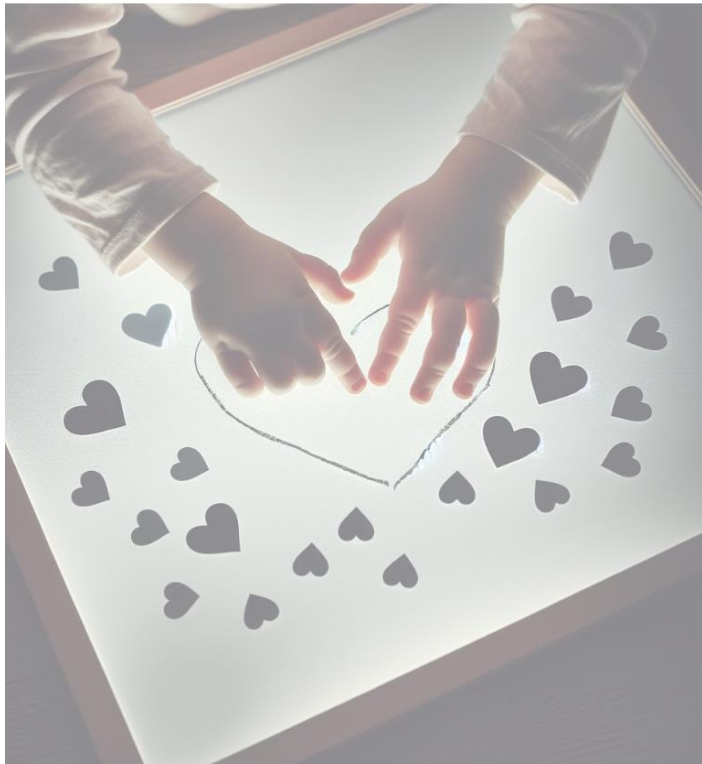
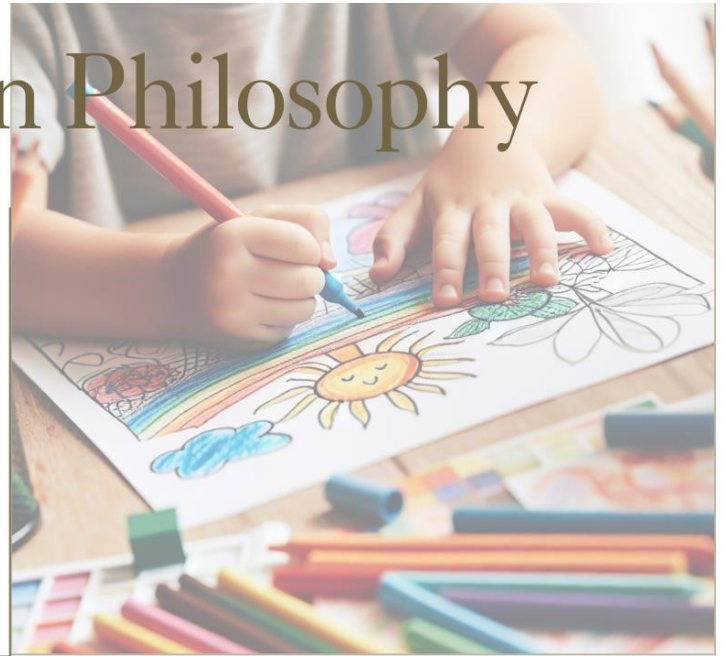
Kindergarten Philosophy

Play-Based Learning

At Marlborough, we believe in the power of play.

The students are learning to be creative, to problem solve, to explore, to experiment, to strategize, and cooperate with others.

They are experiencing and gaining knowledge and understanding about their world.



Children are Capable and Curious: an Inquiry Model

Students can do anything they put their minds to - from zipping up our own jackets to creating an imaginative world! Our role is to provide opportunities for students to engage in activities that encourage a growth mindset and an **I Can Try** attitude.

Children learn naturally through exploring their environment. Asking questions and finding answers leads to more questions and fostering student curiosity and critical and creative thinking skill. Students are actively engaged in creating learning experiences with their teacher.

First People's Principles of Learning

In class, learning involves time and patience. Learning is relational and focused on connectedness and a sense of place.





NELSON STREET



WEST BUILDING

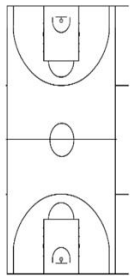


Staff Parking

DOVER STREET



Staff Parking

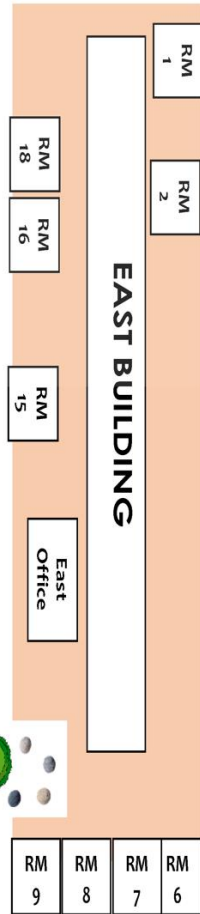


WEST BUILDING

West Office



COURTYARD



EAST BUILDING

RM 18

RM 16

RM 15

East Office

RM 1

RM 2

RM 9

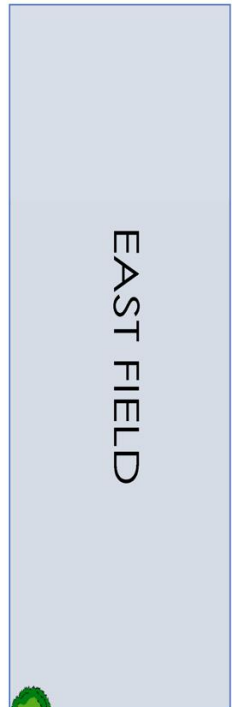
RM 8

RM 7

RM 6



Kindergarten Playground



EAST FIELD

ROYAL OAK AVENUE



MARLBOROUGH ELEMENTARY MAP
6060 Marlborough Avenue, Burnaby, BC